



OWNER'S MANUAL

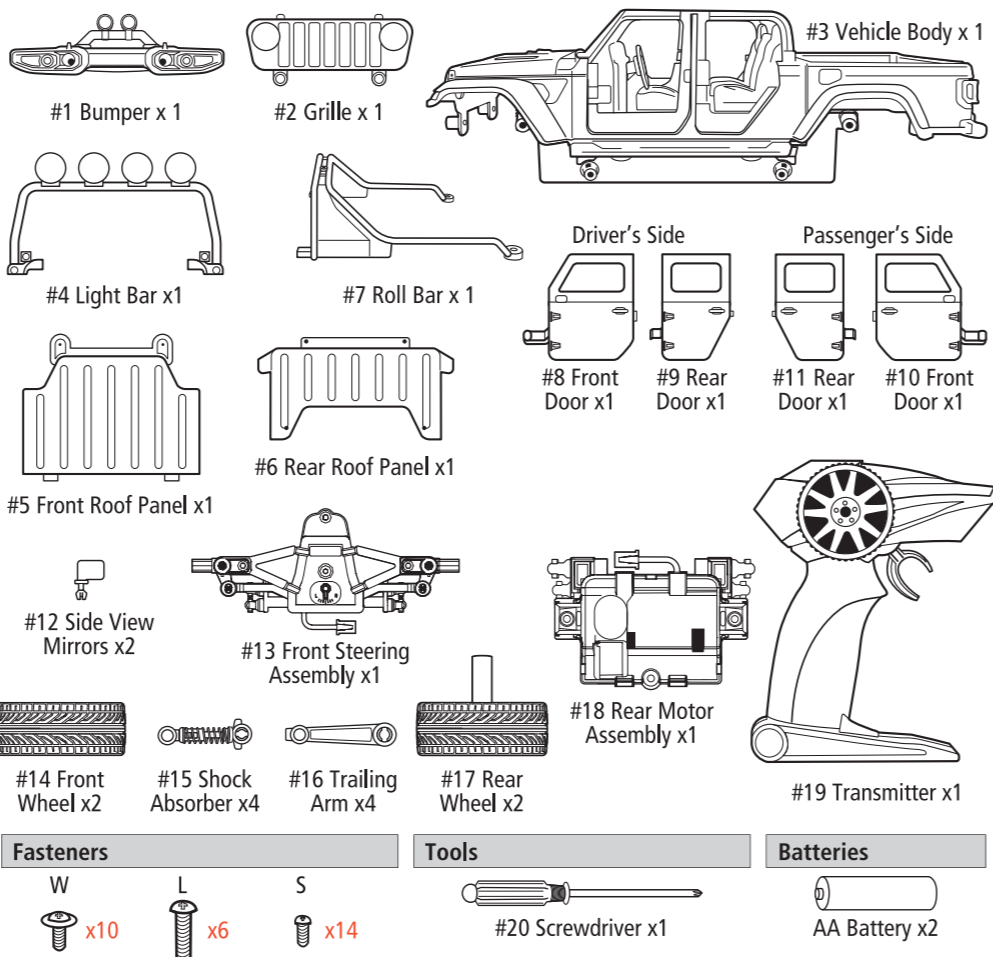
Please read and understand all precautions prior to use.

Thank you for choosing a premium New Bright product.



Component Checklist

Part #	Part Name	Qty.	Part #	Part Name	Qty.
#1	Bumper	1	#11	Passenger's Side Rear Door	1
#2	Grille	1	#12	Side View Mirrors	2
#3	Vehicle Body	1	#13	Front Steering Assembly	1
#4	Light Bar	1	#14	Front Wheels	2
#5	Front Roof Panel	1	#15	Spring Shock Absorbers	4
#6	Rear Roof Panel	1	#16	Trailing Arm	4
#7	Roll Bar	1	#17	Rear Wheels	2
#8	Driver's Side Front Door	1	#18	Rear Motor Assembly	1
#9	Driver's Side Rear Door	1	#19	Transmitter	1
#10	Passenger's Side Front Door	1	#20	Screwdriver	1



Fasteners	Tools	Batteries
W x10	#20 Screwdriver x1	AA Battery x2
L x6		
S x14		

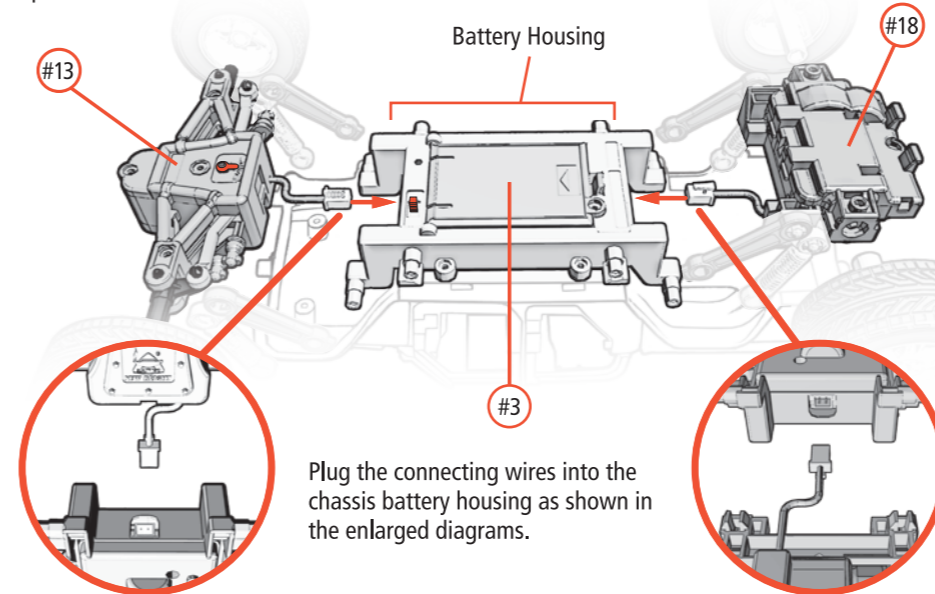
Chassis Assembly

Step 1: Assemble Chassis Components

Parts Needed

#13 Front Steering Assembly x1	#18 Rear Motor Assembly x1	#3 Vehicle Body
--------------------------------	----------------------------	-----------------

Flip vehicle over.



Step 2: Attach Trailing Arms and Shocks

Parts Needed

#16 Trailing Arm x4	#15 Spring Shock Absorbers x4
---------------------	-------------------------------

Fasteners Needed

Washer Screw (W) x8

Tools Needed

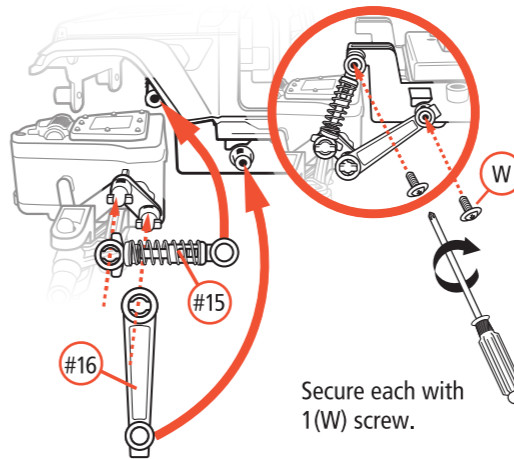
Screwdriver

Note: It is possible that the spring shock absorber parts may become separated. See section 12 for instructions on how to reassemble them.

Hold shock horizontally and align hole with peg, as shown. Rotate end upward toward upper post.

Hold trailing arm vertically and align hole with peg. Rotate end upward toward lower peg.

Repeat this process until all 4 shocks and trailing arms are attached.



Secure each with 1(W) screw.

Attaching the Wheels

Step 3: Attach Front and Rear Wheels

Parts Needed

#14 Front Wheel x2	#17 Rear Wheel x2
--------------------	-------------------

Fasteners Needed

Washer Screw (W) x2	Long Screw (L) x2
---------------------	-------------------

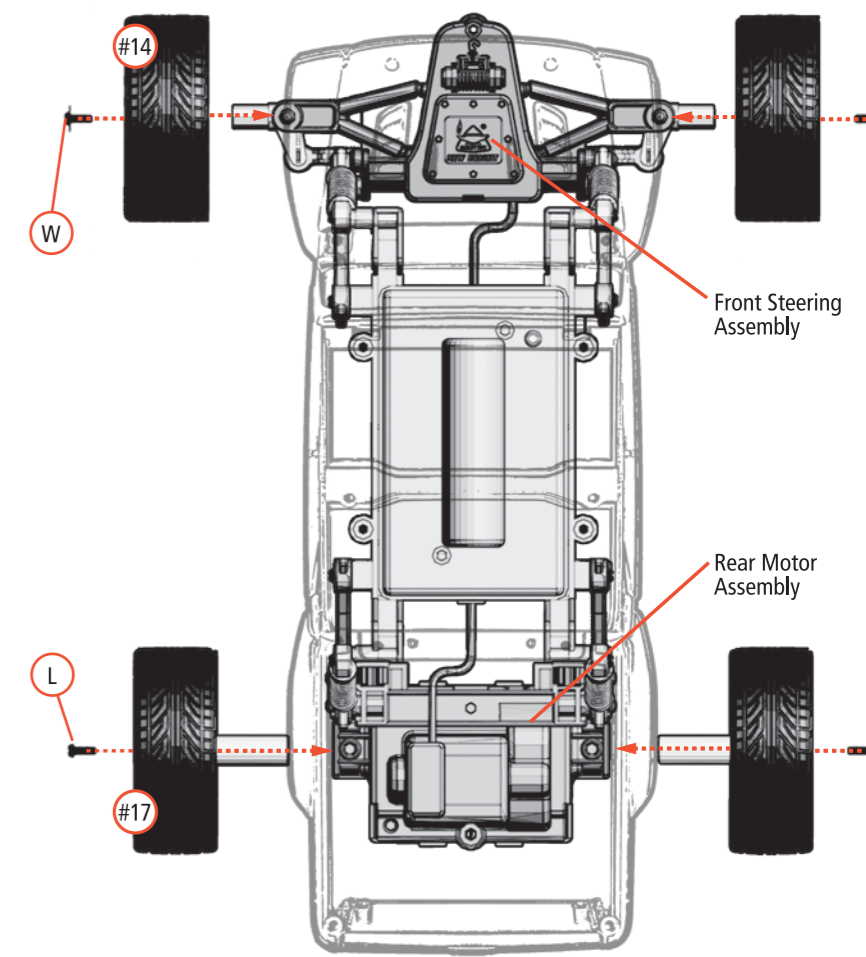
Tools Needed

Screwdriver

Slide front wheel over the wheel post located on the front steering assembly. Secure with 1 (W) screw.

Align rear wheel post with hole on rear motor assembly. Secure with 1 (L) screw.

Repeat these steps to attach the wheels on the opposite side.

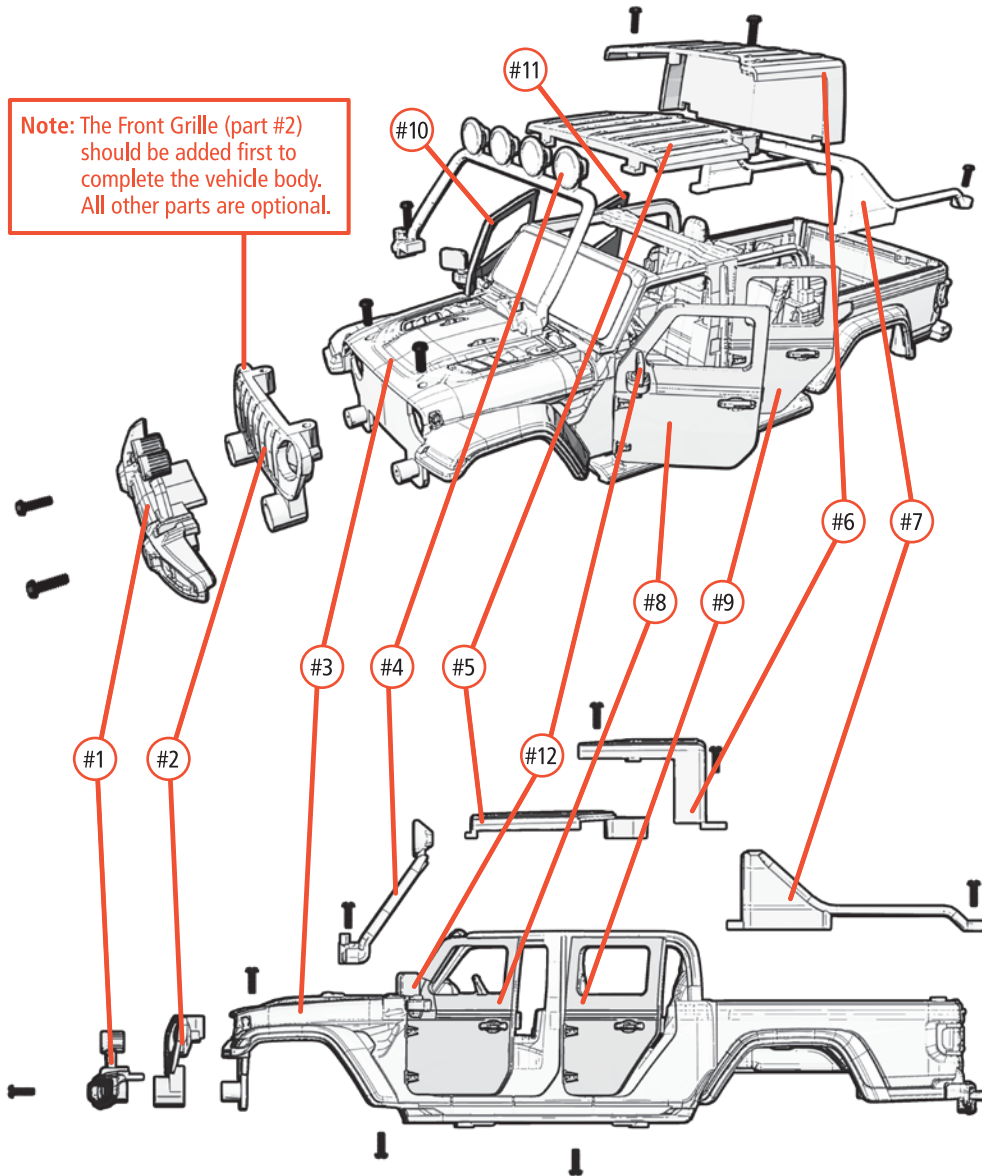


Body Customization

Parts Assembly Overview

You can choose to add as many or as few of the vehicle body parts and accessories as you wish. The next steps explain how to assemble the vehicle using all included parts.

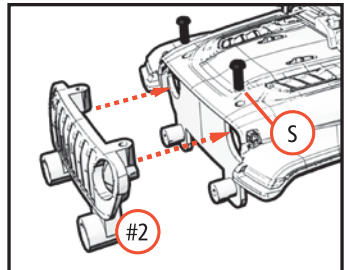
Note: The Front Grille (part #2) should be added first to complete the vehicle body. All other parts are optional.



Body Customization Detail

Step 4: Attach Front Grille

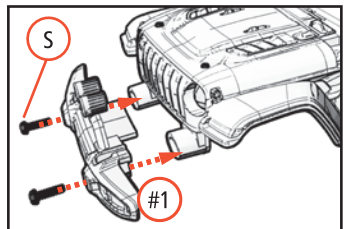
Parts Needed
#2 Front Grille x1
Fasteners Needed
Small Screw (S) x2
Tools Needed
Screwdriver



Slide Grille into place as shown. Secure in place with 2 Small Screws (S).

Step 5: Attach Bumper (optional)

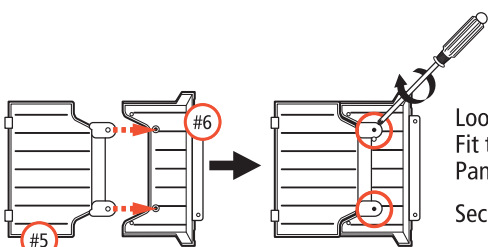
Parts Needed
#1 Bumper x1
Fasteners Needed
Small Screw (S) x2
Tools Needed
Screwdriver



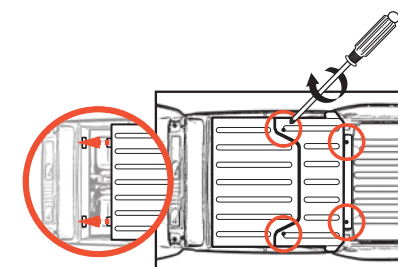
Slide Bumper into place in front of the Grille. Secure in place with 2 Small Screws (S).

Step 6: Attach Roof Panels (optional)

Parts Needed	Fasteners Needed	Tools Needed
#5 Front Roof Panel x1 #6 Rear Roof Panel x1	Small Screw (S) x6	Screwdriver



Look at the underside of the Front and Rear Roof Panels. Fit the Front Roof Panel over the posts on the Rear Roof Panel as shown. Secure in place with 2 Small Screws (S).

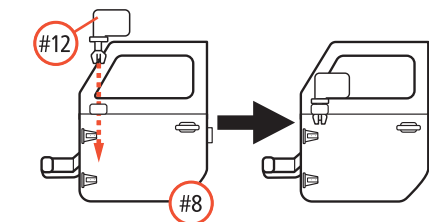


Align the tabs on the Front Roof Panel and slide forward. Secure roof in place with 4 Small Screws (S) in the areas shown on the left.

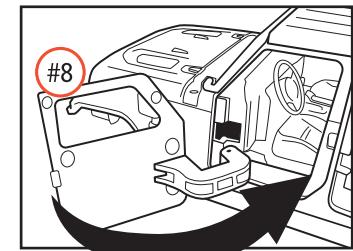
Body Customization Detail

Step 7: Assemble and Attach the Doors (optional)

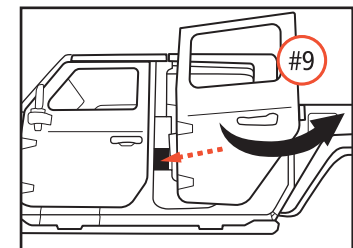
Parts Needed	Fasteners Needed	Tools Needed
#8,9,10,11 Front & Rear Doors #12 Side View Mirrors x2	Long Screw (L) x4	Screwdriver



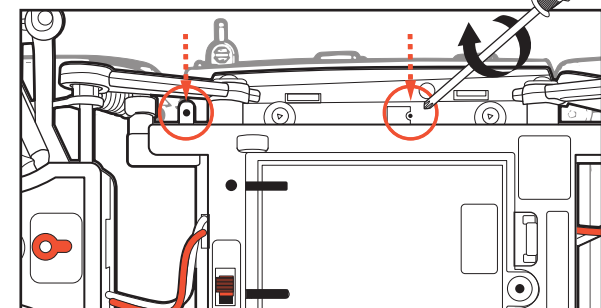
Attach Side View Mirrors on Front Doors



Align Front Door hinge with hole as shown. Move door with a closing motion to slide the hinge through until edge of the door is flush with the vehicle body. Push door closed. Locking tab will snap in place when door is closed.



Align Rear Door hinge with hole as shown. Push door into place until the edge is flush with the vehicle body. Close door. Locking tab will snap in place when door is closed. Repeat this process to attach the doors on the opposite side of vehicle.



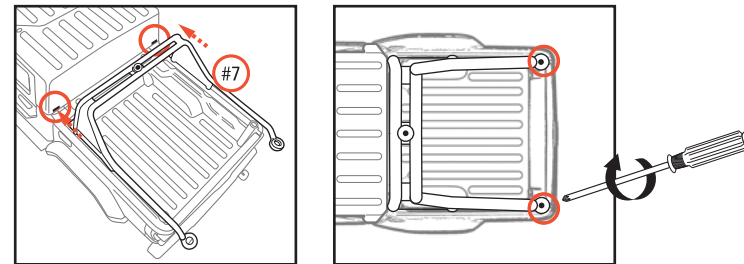
Flip vehicle over. Note the hole locations in the diagram on the left. Secure each door with 1 Long Screw (L). Repeat this process to secure the doors on the opposite side of the vehicle.

Once assembled, front and rear doors can be opened. Open by inserting a finger through the window. Pinch with your thumb, then gently pull open. Do not pull open door by grabbing the top portion of the door.

Body Customization Detail

Step 8: Attach Roll Bar (optional)

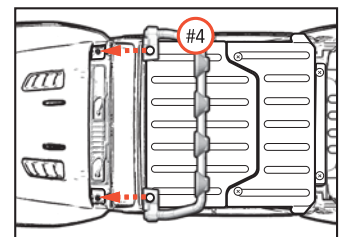
Parts Needed
#7 Roll Bar x1
Fasteners Needed
Small Screw (S) x2
Tools Needed
Screwdriver



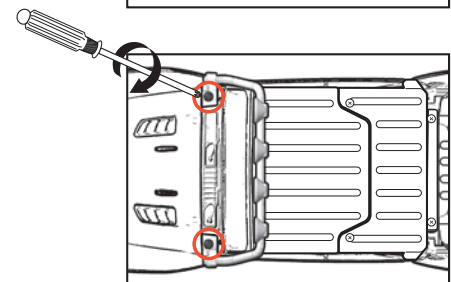
Align the tabs on the Roll Bar as shown and slide the part forward. Secure in place with 2 Small Screws (S).

Step 9: Attach Light Bar (optional)

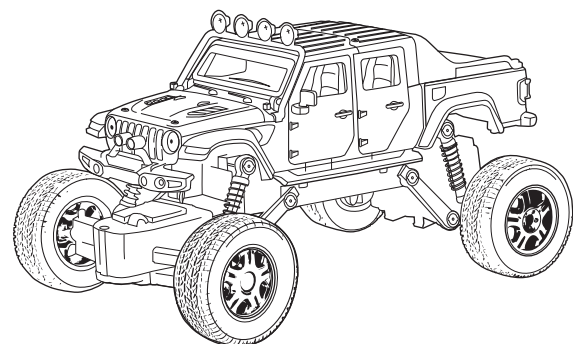
Parts Needed
#4 Light Bar x1
Fasteners Needed
Small Screw (S) x2
Tools Needed
Screwdriver



Place Light Bar in front of the Windshield.

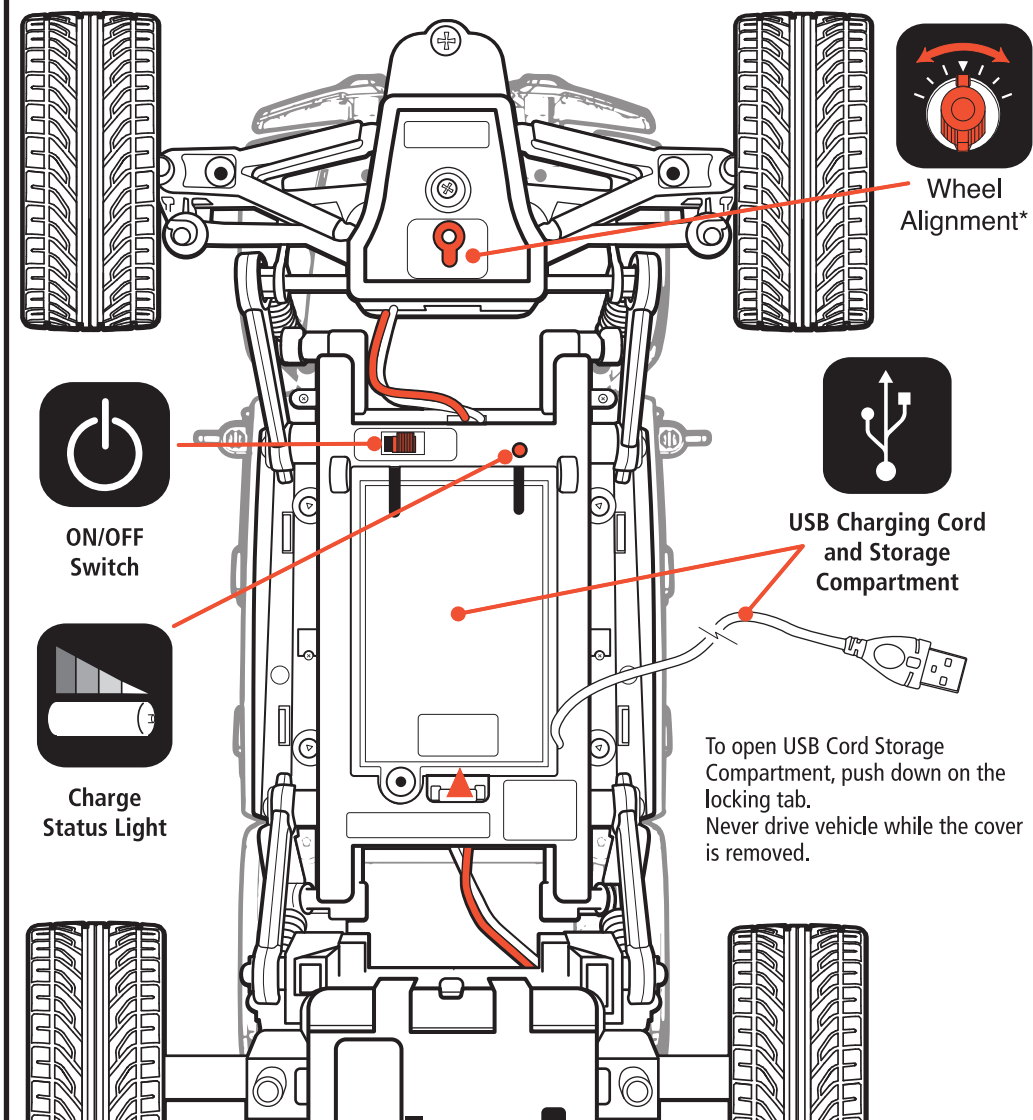


Secure in place with 2 Small Screws (S).



Vehicle Features

The ON/OFF Switch controls the main power to the vehicle. To save battery life, always remember to put switch in the OFF position when not in use.

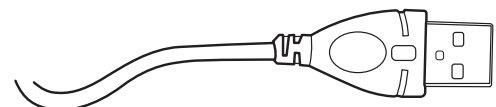


* If vehicle pulls to the left or right during forward driving the Wheel Alignment may need to be adjusted. The Wheel Alignment Dial is located on bottom of chassis between the front wheels.

Charging the Vehicle

This vehicle is equipped with an internal Lithium-Ion battery that is recharged via USB. ON/OFF Switch must be in the OFF position prior to charging.

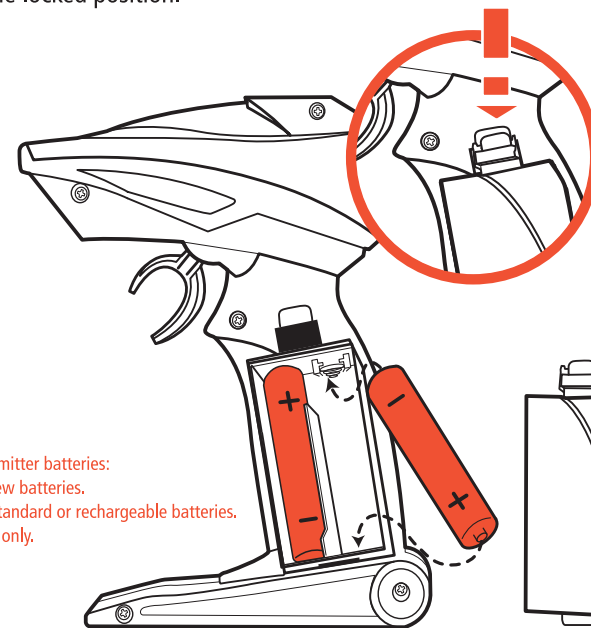
1. Locate the ON/OFF switch and USB cord compartment on the under-side of the vehicle.
2. Turn the ON/OFF switch to the "OFF" position.
3. Open Storage Compartment cover.
4. Remove USB cable from the Storage Compartment. (Use care when extending cord as it is attached to inside internal battery). Cord can be plugged into any 5V DC computer or 5V DC USB outlet adapter (not included).



5. While charging, the LED under the vehicle will be on. Once fully charged the LED will turn off. Charging is completed in approximately 1 hour. Return cord and secure storage lid before operating the vehicle.

Battery Installation

1. Locate and remove the Battery Compartment Cover which is located on the back of the Transmitter.
2. Insert 2 "AA" size batteries. Make certain the positive (+) and negative (-) markings on the batteries are in the same position as the positive (+) negative (-) markings inside the Battery Compartment.
3. Replace Battery Compartment Cover making certain that the Battery Compartment tab has "snapped" into the locked position.



Note: When replacing Transmitter batteries:
Do not mix old and new batteries.
Do not mix alkaline, standard or rechargeable batteries.
Use alkaline batteries only.

Syncing

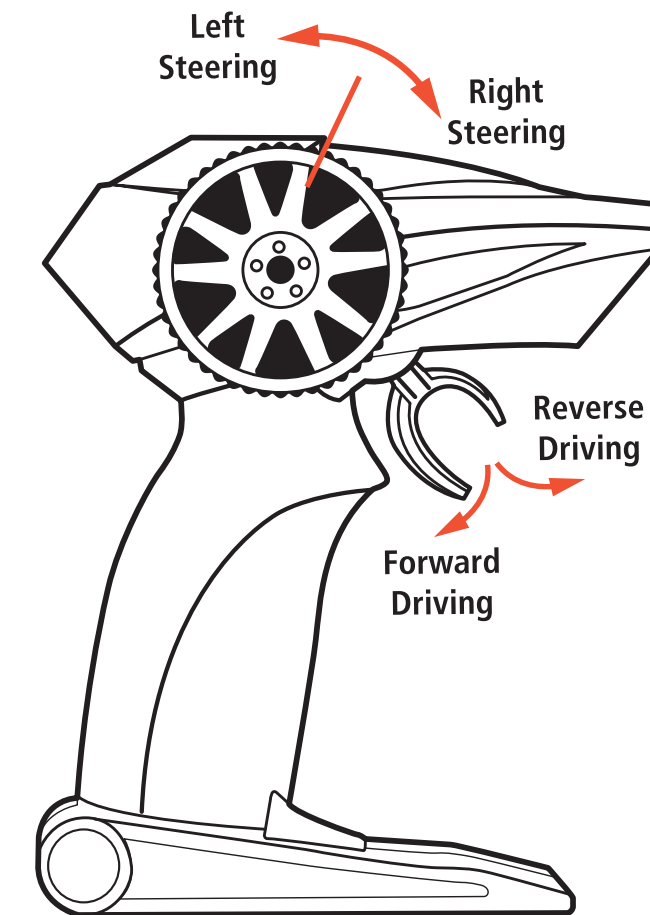
This transmitter is equipped with 2.4GHz technology which allows up to 6 vehicles to be used at the same time.

Before first use and after any time the batteries are replaced, the transmitter must be paired to the vehicle.

To sync transmitter and vehicle, follow the steps below:

1. Correctly install batteries in the transmitter.
2. Place vehicle upside down, and turn Vehicle ON/OFF switch to the ON position. The vehicle is only in sync mode for 30 seconds.
3. Immediately pull and hold the Forward/Reverse trigger on the transmitter. Keep holding until wheels move (up to 30 sec).

Functions



Forward Driving:
Pull trigger back and hold.

Reverse Driving:
Push trigger forward and hold.

Right Turning:
Turn wheel to the right.

Left Turning:
Turn wheel to the left.

Assembly Notes

Retain these instructions for future reference.

Keep extra parts together with instructions.

Do not force screws. If met with resistance, back out and try again.

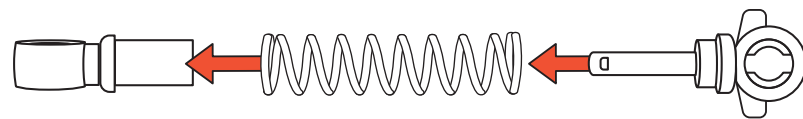
Do not over-tighten screws.

To add both the Roof and Roll Bar to vehicle, the Roof must be attached to the vehicle first.

Adult supervision recommended.

Spring Shock Absorber Assembly

If the spring shock absorber parts become separated, follow the instructions on how to reassemble them.



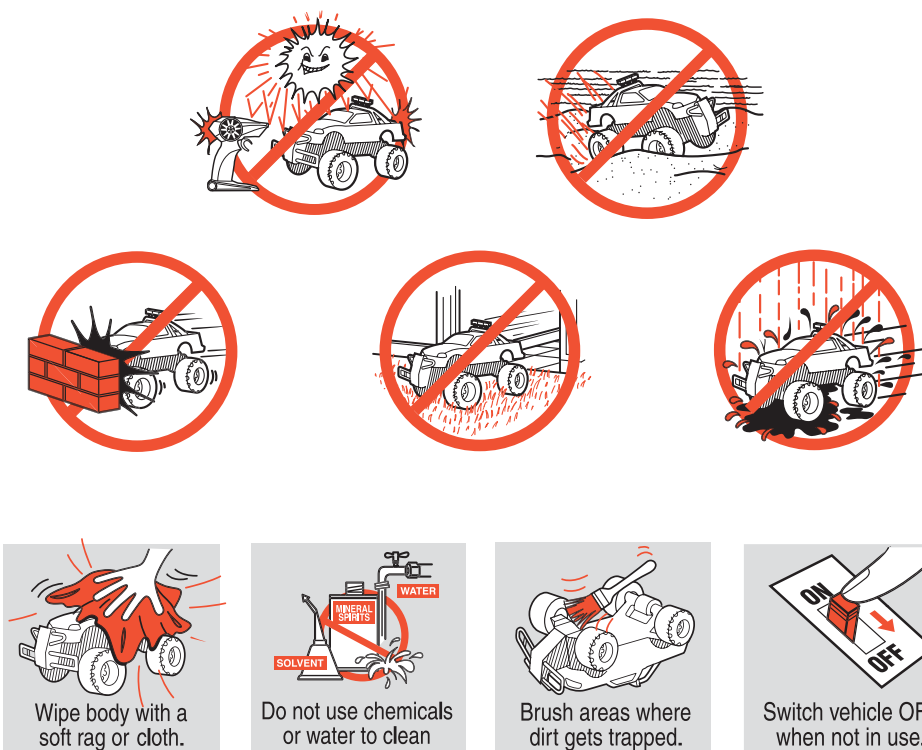
Hold Spring Shock Absorber parts as shown.

Slide the Spring onto the post. Using the next piece, guide the rod through and compress the spring.

Rotate the piece on the left towards you, about a quarter turn, to lock pieces together.



Precautions and Care



Wipe body with a soft rag or cloth.

Do not use chemicals or water to clean

Brush areas where dirt gets trapped.

Switch vehicle OFF when not in use.

F.C.C. CAUTION:

Changes or modifications not expressly approved by the party responsible for compliance could void the user's authority to operate the equipment.

This device complies with Part 15 of the FCC Rules. Operation is subject to the following two conditions: (1) this device may not cause harmful interference, and (2) this device must accept any interference received, including interference that may cause undesired operation.

NOTE: This equipment has been tested and found to comply with the limits for a Class B digital device, pursuant to Part 15 of the FCC Rules. These limits are designed to provide reasonable protection against harmful interference in a residential installation. This equipment generates, uses and can radiate radio frequency energy and, if not installed and used in accordance with the instructions, may cause harmful interference to radio communications. However, there is no guarantee that interference will not occur in a particular installation. If this equipment does cause harmful interference to radio or television reception, which can be determined by turning the equipment off and on, the user is encouraged to try to correct the interference by one or more of the following measures:

- Reorient or relocate the receiving antenna.
- Increase the separation between the equipment and receiver.
- Connect the equipment into an outlet on a circuit different from that to which the receiver is connected.
- Consult the dealer or an experienced radio/TV technician for help.

Troubleshooting & Support

Problem - Vehicle does not move or moves slowly.

- Make certain there are fresh batteries in the transmitter and that they have been installed in the correct position. You may need to re-sync the Transmitter and Vehicle. Follow Sync instructions in section 10.
- Are the (+) and (-) markings on the batteries in the same position as the (+) and (-) markings in the Transmitter Battery Compartment?
- Are the metal contact tabs touching, rusty or dirty in the transmitter?
- Has the vehicle been fully charged?
- Make certain that the vehicle ON/OFF switch is in the "ON" position.

Problem - Vehicle moves by itself or exhibits reduced range from the transmitter.

- Make certain there are no outside radio interference in your area. The best way to test this is to take the vehicle as far away from radio towers, electrical lines or tall buildings as possible to ensure no further radio interference will occur.

Always remove Batteries from transmitter when not in use.

Do not dispose batteries in fire. Leakage, explosion and personal injury may occur.

Do not attempt jumps or tricks with this vehicle.

Do not attempt to remove internal battery.

Do not use included USB cord for anything other than its intended purpose.

Always keep USB cord stored when not in use.

Do not over-tighten screws.

Adult supervision recommended.

Warranty Info

USA & Canada
30-Day Limited Warranty

New Bright Industries warrants to the original purchaser that this product will be free of defects in materials and workmanship for thirty (30) days from the date of purchase. In the event of such defect within the warranty period, New Bright will repair or replace the product at our sole discretion. This warranty does not cover damage resulting from unauthorized modifications, accident, misuse or abuse.

Should your item have a defect covered under this warranty, first call the toll free number listed below. Most problems can be resolved in this manner. If necessary, you will be issued a Return Authorization (RA) number and instructions on how to obtain a Product Return Form. The Product Return Form is to be used when returning a product to us (postage pre-paid and insured by the consumer).

When returning a defective product, please package the product, the Product Return Form and a copy of the dated sales receipt as proof of purchase. Be sure to mark the RA number on the Product Return Form. If the product is returned without a dated sales receipt, it will be excluded from coverage under this warranty. Please allow 4 to 6 weeks for delivery of repaired or replacement vehicles (depending on your location).

New Bright Industries' liability for defects in materials and workmanship under this warranty shall be limited to repair or replacement at our sole discretion. In no event shall we be responsible for incidental, consequential or contingent damages (except in those states that do not allow this exclusion or limitation).

Valid only in the USA & Canada.

Contact New Bright Industries Customer Service Toll Free at:
1-877-NBI-TOYS
(1-877-624-8697)
Monday through Friday, 8:00 AM to 5:00 PM Eastern Time

U.S. Toy Sales and Marketing Co. Inc.
30260 Oak Creek Drive – 2nd Floor
Wixom MI 48393
1-877-624-8697
<http://www.newbright.com/contact>