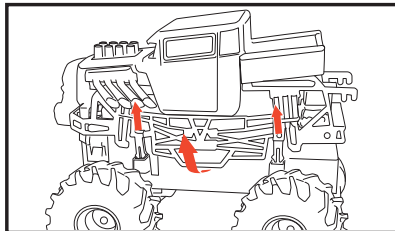
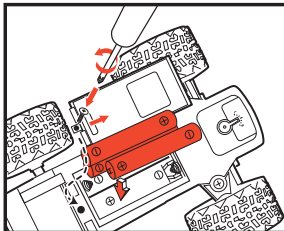
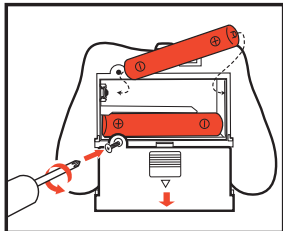




BATTERY INSTALLATIONS AND OPERATING INSTRUCTIONS



Battery Installation:

1. Remove screws and slide to open battery compartment covers on vehicle and transmitter.
2. Install 2 "AAA" alkaline batteries in the transmitter and 3 "AAA" alkaline batteries in the vehicle with positive (+) and negative (-) ends matching the compartment markings.
3. Replace the battery covers and replace the screws.
4. The transmitter will automatically sync with the vehicle.
5. The vehicle is equipped with 2.4GHz technology which allows up to 6 vehicles to be raced at the same time.

Operation:

1. **START:** Move switch on top of vehicle to the "ON" position.
2. **FORWARD/REVERSE:** Push forward/reverse joystick up to move vehicle forward and down for reverse.
3. **LEFT/RIGHT STEERING:** Push left/right joystick left to turn vehicle left or right to turn right.

Steering Trim:

If the vehicle veers to the left or right, adjust steering trim on underside of vehicle until the desired alignment is reached.

Vehicle Body Swap:

1. To change the Truck body, locate the 4 locking posts under the sidetrack on both sides of the vehicle.
2. Gently pull both sides of the side trim away from the locking posts and gently lift upward.
3. To replace body, align the side trim over all 4 locking posts and snap into place.

Battery Requirements:

Vehicle: 3 "AAA" Batteries.

Transmitter: 2 "AAA" Batteries.

For Best Results:

1. Do not mix old and new batteries.
2. Do not mix alkaline, standard or rechargeable batteries.
3. Use alkaline batteries only.

F.C.C. CAUTION:

Changes or modifications not expressly approved by the party responsible for compliance could void the user's authority to operate the equipment.

This device complies with Part 15 of the FCC Rules.

Operation is subject to the following two conditions:

- (1) this device may not cause harmful interference, and
- (2) this device must accept any interference received, including interference that may cause undesired operation.

NOTE:

This equipment has been tested and found to comply with the limits for a Class B digital device, pursuant to Part 15 of the FCC Rules. These limits are designed to provide reasonable protection against harmful interference in a residential installation. This equipment generates, uses and can radiate radio frequency energy and, if not installed and used in accordance with the instructions, may cause harmful interference to radio communications. However, there is no guarantee that interference will not occur in a particular installation. If this equipment does cause harmful interference to radio or television reception, which can be determined by turning the equipment off and on, the user is encouraged to try to correct the interference by one or more of the following measures:

- Reorient or relocate the receiving antenna.
- Increase the separation between the equipment and receiver.
- Connect the equipment into an outlet on a circuit different from that to which the receiver is connected.
- Consult the dealer or an experienced radio/TV technician for help.

Contact New Bright Customer Service at
Toll Free

1-877-624-8697

M-F 8:00AM to 5:00PM Eastern Time

U.S. Toy Sales and Marketing Co., Inc.
30260 Oak Creek Drive - 2nd Floor
Wixom MI 48393

1-877-624-8697

<http://www.newbright.com/>