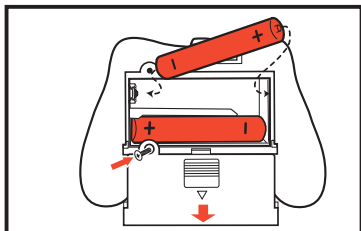




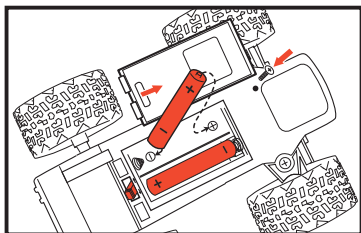
BATTERY INSTALLATIONS AND OPERATING INSTRUCTIONS



TRANSMITTER

Transmitter Battery Installation:

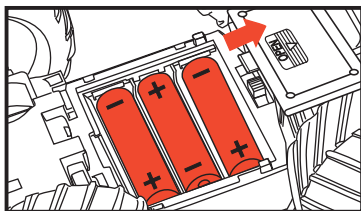
1. Locate and remove screw and slide to open battery compartment cover on transmitter.
2. Install 2 “AAA” alkaline batteries in the transmitter with positive (+) and negative (-) ends matching the compartment markings.
3. Replace the battery cover and replace the screw.



SMALL TRUCKS

Small Truck Battery Installation:

1. Locate and remove screw and slide to open battery compartment cover on vehicle.
2. Install 2 “AAA” alkaline batteries in the vehicle with positive (+) and negative (-) ends matching the compartment markings.
3. Replace the battery cover and replace the screw.



TRUCK HAULER

Hauler Battery Installation:

1. Slide to open battery compartment cover on vehicle.
2. Install 3 “AA” alkaline batteries in the vehicle with positive (+) and negative (-) ends matching the compartment markings.
3. Replace the battery cover.

Operation:

Move switch on bottom of desired vehicle to the “ON” position.

To drive FORWARD, push the center joystick forward.

To STOP, release the joystick.

NOTE: One transmitter operates all three vehicles.

If a vehicle moves unintentionally, be sure the ON/OFF switch is in the OFF position.

Vehicle Storage:

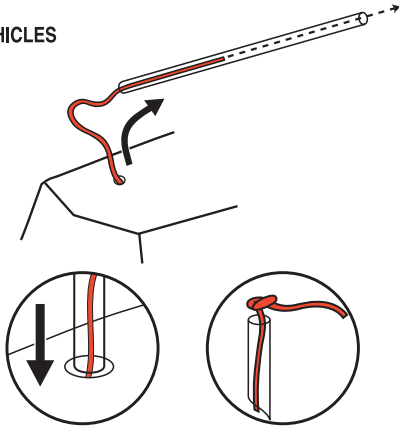
Trailer Box doors can be opened for storage of 2 small trucks and transmitter.

For Best Results:

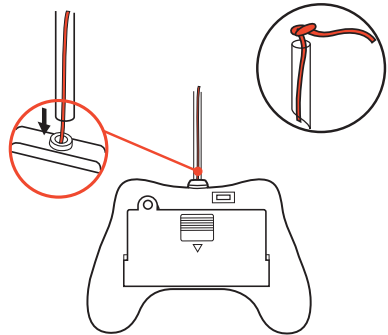
1. Do not mix old and new batteries.
2. Do not mix alkaline, standard or rechargeable batteries.
3. Use alkaline batteries only.

Antenna Placement

VEHICLES



TRANSMITTER



USA & Canada 30-Day Limited Warranty

New Bright Industries warrants to the original purchaser that this product will be free of defects in materials and workmanship for thirty (30) days from the date of purchase. In the event of such defect within the warranty period, New Bright will repair or replace the product at our sole discretion. This warranty does not cover damage resulting from unauthorized modifications, accident, misuse or abuse.

Should your item have a defect covered under this warranty, first call the toll free number listed below. Most problems can be resolved in this manner. If necessary, you will be issued a Return Authorization number (RA) and instructions on how to obtain a Product Return Form. The Product Return Form is to be used when returning a product to us (postage pre-paid and insured by the consumer).

When returning a defective product, please package the product, the Product Return Form and a copy of the dated sales receipt as proof of purchase. Be sure to mark the RA number on the Product Return Form. If the product is returned without a dated sales receipt, it will be excluded from coverage under this warranty. Please allow 4 to 6 weeks for delivery of repaired or replacement vehicles (depending on your location).

New Bright Industries' liability for defects in materials and workmanship under this warranty shall be limited to repair or replacement at our sole discretion. In no event shall we be responsible for incidental, consequential or contingent damages (except in those states that do not allow this exclusion or limitation).

Valid only in the USA & Canada.

Contact New Bright Industries Customer Service Toll Free at:

1-877-NBI-TOYS
(1-877-624-8697)

Monday through Friday, 8:00 AM to 5:00 PM Eastern Time

F.C.C. CAUTION:

Changes or modifications not expressly approved by the party responsible for compliance could void the user's authority to operate the equipment.

NOTE: This equipment has been tested and found to comply with the limits for a Class B digital device, pursuant to Part 15 of the FCC Rules. These limits are designed to provide reasonable protection against harmful interference in a residential installation. This equipment generates, uses and can radiate radio frequency energy and, if not installed and used in accordance with the instructions, may cause harmful interference to radio communications. However, there is no guarantee that interference will not occur in a particular installation. If this equipment does cause harmful interference to radio or television reception, which can be determined by turning the equipment off and on, the user is encouraged to try to correct the interference by one or more of the following measures:

- Reorient or relocate the receiving antenna.
- Increase the separation between the equipment and receiver.
- Connect the equipment into an outlet on a circuit different from that to which the receiver is connected.
- Consult the dealer or an experienced radio/TV technician for help.